

159-211 Coburns Road  
MELTON 3337  
03 9743 4966  
melton.ss@education.vic.gov.au

**Bacchus Marsh**  
Coaches

**ABSENCE LINE**  
**03 5366 3444**

### DATES TO REMEMBER

MARCH	GLASSES FOR KIDS FORMS DUE
MARCH	SCHOOL COUNCIL ELECTIONS
MARCH 28TH	SCHOOL PHOTOS
JUNE 24TH	CUT OFF FOR CSEF

 **COMPASS**  
School Manager



 Melton Specialist School  
@meltonspecialistschool.5162

### Newsletter Edition 3 2022 - Friday 11th March

Hello Parents & Carers,

Once again, we have passed the half way point for Term 1, it never ceases to amaze me how quickly the weeks zip by, but what a wonderful Term 1 it has been so far!

Our students are engaged and are clearly happy to be back into their school routine. They are all showing such enthusiasm for the lesson plans that our teachers have worked so hard to create. It is always the goal of an MSS teacher to ensure that their approach to teaching is fun, creating a wonderful balance of curiosity, questions and smiles!

I think you'll agree the work below is amazing, well done guys!



- Thomas Berhane
- Cody Brake
- Ahmed Aamer
- Zaine Trommler
- Christina Bubeck
- All of P12!

### INTERNATIONAL DAY AGAINST BULLYING AND VIOLENCE

18 March 2022 is National Day of Action against Bullying and Violence.  
<https://bullyingnoway.gov.au/NationalDay>

On Friday 18th your son or daughter will be doing an activity to act and empower young people to be part of a solution when addressing bullying in their school community.

The link above will take you to a website that highlights that all of us can help make changes to create safer communities and schools for everyone.

### PARENT DROP OFF AND PICK UP

Please remember not to line up and double park outside Gate 1. We understand that at times this is frustrating and you may have to do a loop – this is why we ask that parents and carers do not arrive before 8:55.

Police have been present and parents have been fined for double parking. If you miss the school bus please drop your child off through the loop in Gate 1 after 9am.

## **STAFFING**

We are currently experiencing an unprecedented number of staff absences due to the Covid-19 isolation requirements, as such, we would like to convey our gratitude to you all for your patience and understanding during this time.

Please be assured that we always endeavour to return your calls as soon as possible, but given our limited staffing at present and our need to ensure the students remain our main priority, our response times may be delayed.

Once again, thank you for your understanding.

## **COMMUNICATION**

If you need to communicate with your child's teacher, please use student diaries, email or Seesaw. Please do not use student drop off or pick up, to pass on messages as often they do not reach the intended recipient.

## **SCHOOL COUNCIL ELECTIONS**

The Notice of Election and Call for Nominations has now been released and is displayed in the administration office.

We are now seeking 4 Parent Members and 1 School Employee Member.

Nomination forms can be obtained at reception and must be returned by 15 March 2022 before 4.00 p.m. The ballot will close on 21 March 2022.

We generally meet once a month for about 1 ½ hours, if you are interested, please feel free to give me a call for more information.

## **COVID SAFETY**

### **WHAT YOU NEED TO KNOW**

If your child is not experiencing COVID-19 symptoms, they can continue to attend school, but you should monitor for symptoms.

Students who show symptoms of COVID-19 cannot attend school and should get tested immediately and isolate until they receive a negative result.

- o Students should continue with daily rapid antigen testing on school days (5 days per week)
- o Students who have recovered from COVID-19 do not need to participate in surveillance testing for 30 days after their isolation period has ended
- o For information on symptoms visit: <https://www.coronavirus.vic.gov.au/symptoms-and-risks>
- o For more information on how to get tested visit: <https://www.coronavirus.vic.gov.au/taking-test-covid-19>

If your child returns a positive result, your child has COVID-19.

- o You must quarantine your child for seven days
- o You must advise the school about the positive result
- o Your child must stay home until their symptoms have resolved and they are well
- o Everyone in your household is a close contact and must isolate for 7 days

Reporting your child's positive test:

If your child was at school when they were infectious you need to report the positive case through the Student COVID-19 Test Portal or you can notify the school in writing or by phone. You must also report your child's positive test to the Department of Health via the COVID-19 Positive Rapid Antigen Test Self-Reporting Form or call centre on 1800 675 398.

Kind regards,

Brooke  
**School Principal**



# BOWL ABILITIES

TENPIN BOWLING AUSTRALIA'S PREMIER  
LEARN TO BOWL PROGRAM



**Where:** Xplosions Bowl Melton

**When:** Thursday @ 4:30pm,  
starting March 17<sup>th</sup> 2022

**Duration:** 4 weeks

**Cost:** \$40 per participant



**For more information visit**  
**[www.bowlabilities.com.au](http://www.bowlabilities.com.au)**





# INFORMATION FOR FAMILIES

## GLASSES FOR KIDS PROGRAM 2022

---

The Glasses for Kids (GFK) program provides vision screening and testing and, if needed, further testing and glasses for students in Prep to Year 3 age groups. The program is managed and delivered by State Schools' Relief (SSR).

SSR will visit 340 targeted schools between Term 1, 2020 and Term 2, 2023 to offer vision screening (and further testing and glasses if required) to approximately 40,000 Prep to Year 3 students.

### ARE GFK STAFF VACCINATED AGAINST COVID19?

- Yes, all staff and program partners are fully vaccinated and follow strict hygiene protocols

### WHY IS IT IMPORTANT?

- The Glasses for Kids program contributes to achieving the Government's Education State targets including Learning for Life; Happy, Healthy and Resilient Kids; and Breaking the Link.
- The Glasses for Kids program removes vision impairment as a barrier to accessing education and achievement. If left unaddressed, a vision impairment can affect the lifelong learning capabilities of a child. The program helps alleviate this problem by providing an onsite service to children at their school, to address vision impairments in children which otherwise may have gone undiagnosed.
- Watch the GFK video here: <https://stateschoolsrelief.org.au/programs/glasses-for-kids-program/>

### WHO CAN PARTICIPATE?

- The Glasses for Kids program is delivered to targeted schools, including your child's school.
- Prep to Year 3 age groups from targeted mainstream and specialist schools are invited to participate.

### HOW DOES IT WORK?

- If you consent to your child participating in the program, they will have an initial vision screening at school.
- If any further eye testing is required, this will be conducted as part of the session.
- **If glasses are required:** your child will select a frame from our range and the prescription lenses will be ordered at no cost to you or school. Once the glasses are ready, they will be delivered to the school.

### WHO DOES THE INITIAL SCREENING AND FURTHER TESTING?

- One of our GFK Program Partners will be conducting the screening (and testing if required) at your school.

### CAN CHILDREN WITH GLASSES BE PART OF THE PROGRAM?

- Yes, students who already have glasses can take part in the program.
- If the initial screening indicates that further eye testing is required, families may have to cover testing costs if the previous eye examination was bulk billed by Medicare in the last three years.

### DO I HAVE TO RETURN SEPARATE FORMS FOR EACH OF MY CHILDREN?

- Yes, each individual student must have a signed Consent Form **and** a completed Optometrist Questionnaires if they are to participate in the program. Please ensure eligible siblings have their own forms.
- The questionnaire is designed to help inform students' initial screening and if needed, further testing.

### DO I HAVE TO PROVIDE MEDICARE DETAILS?

- Yes, any further testing that may be required is bulk billed through Medicare.
- The optometrist requires the Medicare number in case students require further testing on the day

### WHAT HAPPENS IF THE GLASSES ARE DAMAGED?

- In accordance with SSR's replacement policy, we will cover the cost of new glasses where appropriate.
- Consistent with the consumer rights under Australian Consumer Law, standard returns policy applies.

**Lisa MacKinven**

Program Manager, Glasses for Kids

**M:** 0457 364 450 **E:** [glassesforkids@ssr.net.au](mailto:glassesforkids@ssr.net.au)

State Schools' Relief, PO BOX 4525, Dandenong South, VIC, 3164



Education  
and Training

## FINANCIAL ASSISTANCE INFORMATION FOR PARENTS

Every Victorian child should have access to the world of learning opportunities that exist beyond the classroom. The Camps, Sports and Excursions Fund helps ensure that no student will miss out on the opportunity to join their classmates for important, educational and fun activities. It is part of making Victoria the Education State and the Government's commitment to breaking the link between a student's background and their outcomes.

### CAMPS, SPORTS & EXCURSIONS FUND (CSEF)

School camps provide children with inspiring experiences in the great outdoors. Excursions encourage a deeper understanding of how the world works while sports teach teamwork, discipline and leadership. All are a part of a healthy curriculum.

CSEF is provided by the Victorian Government to assist eligible families to cover the costs of school trips, camps and sporting activities.

If you hold a valid means-tested concession card or are a temporary foster parent, you may be eligible for CSEF. A special consideration category also exists for asylum seeker and refugee families. The allowance is paid to the school to use towards expenses relating to camps, excursions or sporting activities for the benefit of your child.

The annual CSEF amount per student is:

- \$125 for primary school students
- \$225 for secondary school students

### MORE INFORMATION

For more information about CSEF visit:

<https://www.education.vic.gov.au/about/programs/Pages/csef.aspx>

### HOW TO APPLY

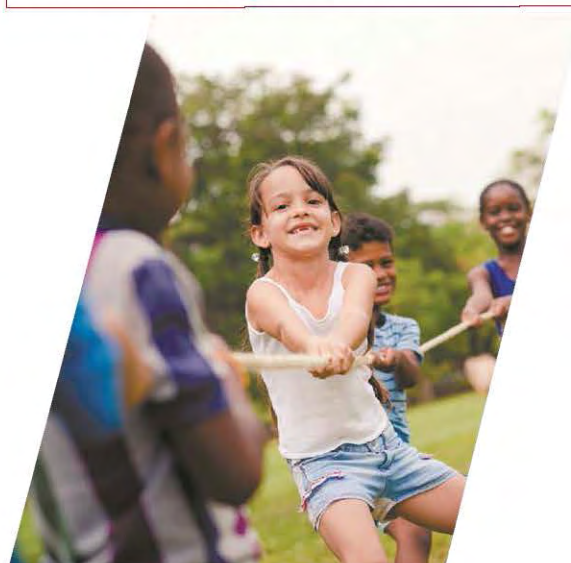
New applicants should contact the school office to obtain a CSEF application form or download from the website below.

If you applied for CSEF at your child's school last year, you do not need to complete an application form this year unless there has been a change in your family circumstances.

You only need to complete an application form if any of the following changes have occurred:

- **new student enrolments;** your child has started or changed schools this year.
- **changed family circumstances;** such as a change of custody, change of name, concession card number, or new siblings commencing this year.

Check with the school office if you are unsure.





## CSEF ELIGIBILITY

Below are the criteria used to determine a student's eligibility for the Camps, Sports and Excursions Fund (CSEF).

### Criteria 1 – General eligibility

To be eligible for the fund, a parent or carer of a student attending a registered Government or non-government Victorian primary or secondary school must:

- on the first day of Term one
  - on the first day of Term two
- a) be a holder of one or more of the eligible financially-means tested cards **OR** be a temporary foster parent and;
- b) submit an application to the school by the due date.

For the list of eligible financially-means tested cards refer to the CSEF Policy:

<https://www2.education.vic.gov.au/pal/camps-sports-and-excursions-fund/policy>

Parents who receive a Carer Allowance on behalf of a child, or any other benefit or allowance not income tested by Centrelink, are not eligible for the CSEF unless they also comply with the above.

### Criteria 2 - Be of school age and attend school in Victoria

For the purposes of CSEF, students may be eligible for assistance if they attend a Victorian registered primary or secondary school. CSEF is not payable to students attending pre-school, kindergarten, home schooled, or TAFE.

### Special Consideration

A special consideration category exists for

- Families on a bridging visa, temporary protection visa, in community detention or are asylum seeker families
- Students in temporary out of home care arrangements, including statutory kinship care

For more information, see <https://www2.education.vic.gov.au/pal/camps-sports-and-excursions-fund/guidance/eligibility>

### Eligibility Date

For concession card holders CSEF eligibility will be subject to the parent/carer concession card being validated successfully with Centrelink on the first day of either term one (31 January 2022) or term two (26 April 2022).

## PAYMENT AMOUNTS

### CSEF payment amount

The CSEF is an annual payment to the school to be used towards camps, sports and/or excursion expenses for the benefit of the eligible student.

- Primary school student rate: \$125 per year.
- Secondary school student rate: \$225 per year.

The CSEF is paid directly to your child's school and will be allocated by the school towards camps, sports and/or excursion costs for your child.

**For ungraded students**, the rate payable is determined by the student's date of birth. For more information, see:

[www.education.vic.gov.au/about/programs/Pages/csef.aspx](http://www.education.vic.gov.au/about/programs/Pages/csef.aspx)

**Year 7 government school students** who are CSEF recipients are also eligible for a uniform voucher. Secondary schools are required to make applications on behalf of parents/carers so please register your interest at the school.

## HOW TO COMPLETE THE APPLICATION FORM

**NOTE: ALL SECTIONS MUST BE COMPLETED BY PARENT/LEGAL GUARDIAN**

1. Complete the PARENT/CARER DETAILS section.

Make sure that the Surname, First Name, and Customer Reference Number (CRN) details match those on your concession card. You will also need to provide your concession card to the school.

If you are claiming as a temporary Foster Parent or a Veteran Affairs Pensioner, you will need to provide a copy of documentation confirming your status as a temporary Foster Parent or provide your Veterans Affairs Pensioner Gold card to the school.

If you are seeking special consideration, mark this in the form and provide a copy of the relevant documentation.

2. Complete the STUDENT/S DETAILS section for students at this school.
3. Sign and date the form and return it to the school office as soon as possible. The CSEF program for 2022 closes on the 24 June 2022.

## CAMPS, SPORTS AND EXCURSIONS FUND (CSEF) APPLICATION FORM

School Name

School REF ID

### Parent/carer details

Surname \_\_\_\_\_

First name \_\_\_\_\_

Address \_\_\_\_\_

Town/suburb \_\_\_\_\_ State \_\_\_\_\_ Postcode \_\_\_\_\_

Contact number \_\_\_\_\_

Centrelink pensioner concession **OR** Health care card number (CRN)

-  -  -  **OR**

☐ Foster parent under a temporary care order\* **OR** ☐ Veterans affairs pensioner (Gold Card)\*\*

\*Foster Parents must provide a copy of the temporary care order letter from the Department of Families, Fairness and Housing (DFFH).

\*\*Applicants must provide a copy of the Veteran Affairs Gold card

Is this an application for special consideration (no CRN needed)? Yes ☐ No ☐

### Student details

Student's surname	Student's first name	Student ID	Date of birth (dd/mm/yyyy)	Year level

I authorise the Department of Education and Training (DET) to use Centrelink Confirmation eServices to perform an enquiry of my Centrelink customer details and concession card status in order to enable the business to determine if I qualify for a concession, rebate or service. I also authorise the Australian Government Department of Families, Fairness and Housing (DFFH) to provide the results of that enquiry to DET.

I understand that:

- DFFH will use information I have provided to DET to confirm my eligibility for the Camps, Sports and Excursions Fund and will disclose to DET personal information including my name, address, payment and concession card type and status.
- this consent, once signed, remains valid while my child is enrolled at a registered Victorian school unless I withdraw it by contacting the school.
- I can obtain proof of my circumstances/details from DFFH and provide it to DET so that my eligibility for the Camps, Sports and Excursions Fund can be determined.
- if I withdraw my consent or do not alternatively provide proof of my circumstances/details, I may not be eligible for the Camps, Sports and Excursions Fund provided by DET.
- Information regarding my eligibility for the Camps, Sports and Excursions Fund may be disclosed to the DFFH and /or State Schools Relief for the purpose of evaluating concession card services or confirming eligibility for assistance.

You are able to request access to the personal information that we hold about you, and to request that any errors be corrected, by contacting your child's school.

Signature of applicant \_\_\_\_\_ Date \_\_\_\_/\_\_\_\_/\_\_\_\_



Workability Project and Job Advocate program present:

# Parent As Career Transition Support

Three Sessions  
design to help you  
coach young people  
on their next steps

6:00pm to 8:00pm  
Wednesdays  
16th, 23rd 30th  
of March  
No Cost





# About PACTS

PACTS is a series of workshops and resources developed to provide parents with up-to-date information about career transition that enables them to support their teenager when they are making career transition decisions.

**This sessions a design for parents of students with disability,  
neurodiverse and mental health**

## Session One

- Communicating with young people about careers
- Talking about ability and employment
- Occupational categories
- Identifying skills and abilities
- Career assessments and resources

## Session Two

- Learning Pathways Plans
- Career services at schools·Education,
- Training and tertiary options
- Apprenticeships and Traineeships
- Group Training Organisations

## Session Three

- Stages of job hunting
- Resumes and Cover letters
- Interview skills
- Disclosure and ability
- Employment Services
- Access and inclusion
- Rights and responsibilities

## Reece Gains

Inclusive Industry Engagement Coodindator  
Department of Education and Training

Reece is neurodiverse has experince  
in Education and Local government space.  
working to build the skills of young people  
with disabilities to gain employment

## Peter Ballbata

Jobs Victoria Advocate Melton City Council

Peter works on the ground to help people  
navigate employment and training services  
by proactively connecting with people,  
where they are, in their local communities.

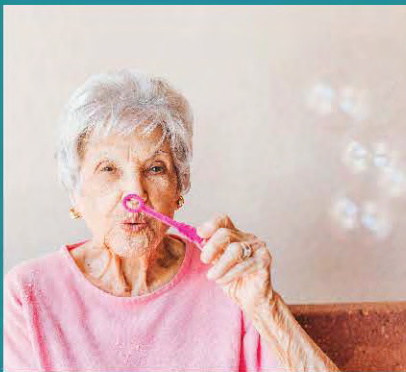
# Sign Up today

<https://bit.ly/3BbKlzo>





# COMMUNITY FEEDBACK OPPORTUNITY



## A STRATEGY FOR ALL ABILITIES AND ALL AGES



We want to learn about the experiences of people with disability, children, young people, older people, and their carers in the City of Melton.

The community conversations will explore a variety of questions related to your experience of living, working, playing or learning in the City of Melton, how this has changed over time, and the improvements that could be made by Council to support you into the future.

---

FOR MORE INFORMATION, VISIT: [CONVERSATIONS.MELTON.VIC.GOV.AU/LIFESTAGES](https://conversations.melton.vic.gov.au/lifestages)



### CSEF FINANCIAL ASSISTANCE

MSS families who already claimed CSEF in the past year do not need to complete an application form this year. If you are a new family to our school, or have not claimed before please find further information on pages 4 and 5. The form to complete is on page 6. If you are unsure, please contact Tori in the Admin Office. We will be in contact with any families that apply who do not meet required criteria.

### UNIFORM SHOP

The uniform shop will be open on Tuesday mornings between 10:30am-12:00pm, and Thursday afternoons between 12:30-2pm. Alternatively you can email or send an order form in with your student's diary to have the order filled and returned to you.

Students are unable to try on uniform items, however feel free to bring in a personal clothing item to help compare sizes. We are **unable to exchange items for different sizes** after purchase. We apologise for any inconvenience.

Preferred payment is Bank Transfer or we can accept **correct Cash** - **we do not have change.**

A copy of the uniform order form is available on our website for you to calculate your total.  
Go to our website> Enrolment> Uniform Order Form



### RUGBY WINDCHEATERS

As a winter special, we have a limited number of *rugby windcheaters* available. They are a thick material the same as the *windcheaters* and *bomber jackets*, but have the appearance of a long sleeve rugby top with a collar and buttons. The *rugby windcheaters* are **\$25** and available in sizes **6-16**. Please contact the office if you are interested in purchasing one.

### CHECK OUT OUR SCHOOL FACEBOOK PAGE!

Remember to "like" Melton Specialist School on Facebook to stay up to date on the latest news and activities. You can also download the school newsletter to see what is coming up on the school calendar.

