

159-211 Coburns Road
MELTON 3337
03 9743 4966
melton.ss@education.vic.gov.au

Bacchus Marsh
Coaches

ABSENCE LINE
03 5366 3444

**DATES TO
REMEMBER**

NOV 1	CURRICULUM DAY
NOV 2	MELBOURNE CUP DAY
DEC 16	LAST DAY TERM 4
DEC 17	2022 MEET & GREET

 **COMPASS**
School Manager



Melton Specialist
School
@meltonspecialistschool.5162

Newsletter Edition 13 - Friday 29th October

Dear Families,

We are so pleased to be welcoming all classes back onsite from Wednesday 3rd November. It has been awesome to see all the students for at least a couple of days this week. We've missed seeing those smiling faces from our young people when they get off the school buses or out of the car. We've even noticed a little bounce in their steps! As we have visited classes this week and last, it is clear for both staff and students, that everyone has missed the opportunity to interact with each other in person.

I appreciate that this has been and will continue to be a challenging transition back to school, so I really appreciate the enthusiasm we have seen from returning staff and students. It has also been great to see so many young people wearing masks – while we know our students are exempt, we have been encouraging them to wear one to practice for when they are in the community or workplace. Thank you to all our families for supporting this.

World Teachers Day

Today our school celebrates World Teachers' Day and recognises the incredible contributions our teachers make to our community. This is an opportunity for our community to say 'thank you'. On this day, we will recognise the passion our teachers have and how teaching has extended beyond the classroom to maintain connections through remote learning. Feel free to let our teachers know you appreciate their resilience, leadership and adaptability throughout the COVID-19 pandemic.

The team at MSS will be celebrating this event by providing some snacks throughout the week to ensure our teams are sustained through the return to onsite teaching! You and your young people can get involved by sending a message of thanks to a teacher who is making, or has made, an impact on your life using hashtag #thanksvictteachers on social media. Don't forget to tag the school so we can see all your messages. Head to World Teachers Day for a range of resources to help you and your children celebrate World Teachers' Day 2021, including 'Thank You' card templates.

PASS Awards

Each year the Principals of Specialist Schools network seeks nominations for outstanding employees in schools. We opened the nominations process to all staff this year so we could recognise the huge impact and effort our staff have had across the school. Whilst we acknowledge it was difficult picking only a few – 2021 saw so many amazing examples of outstanding practice and we would have liked to nominate all our teams. This year we are excited to announce we have three shortlisted candidates. Congratulations to Meena who is shortlisted in the Outstanding ES award and the Speech Therapy Team for the Outstanding Team award. I also very humbly accepted the shortlisting of Outstanding Principal. We wish the shortlisted candidates the very best of luck for the awards night and will let you know the outcome.

Return to on site learning for all students

Wednesday 3rd November brings an end to the staggered return to on site learning, and we are very excited to have all of our students back to school full time. We know that this could be tricky for some of our students and families, and we also acknowledge there is a level of anxiety around returning. If you are experiencing any challenges getting your young person to school, please reach out to your class teacher or sub school leader for support. This is something we have expected and planned for, so we are ready with alternative plans and strategies.

With the return to school, we are happy that the restrictions around community access and camps can also resume. Our teachers are planning in groups to ensure our students can have a fun and engaging Term 4 both in and out of the school grounds. Community expectations of density limits will guide us to ensure we are planning safe excursions and camps.

Masks no longer required outside as of Friday

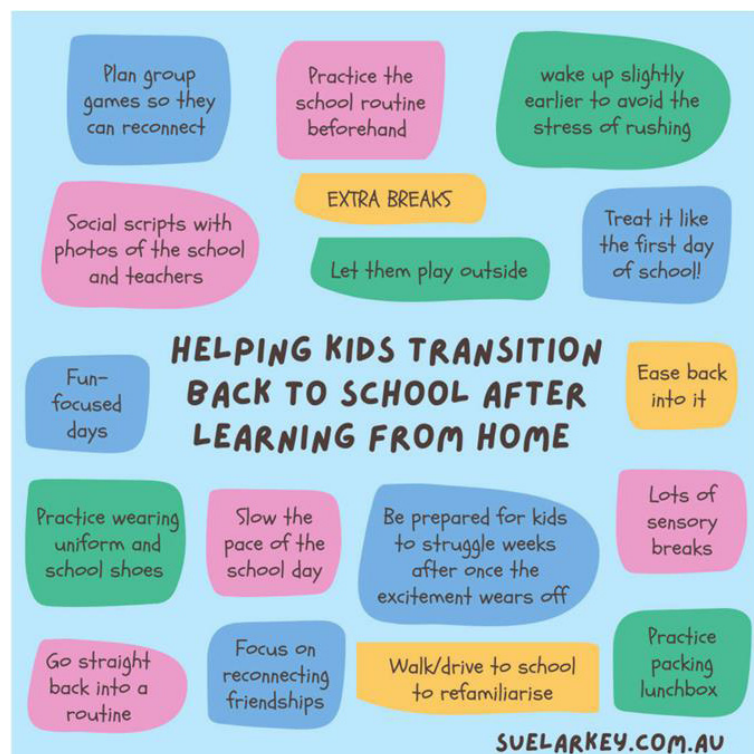
After 6pm Friday the 29th masks will no longer be required outside. This means parents are no longer required to wear masks when getting out of the car at parent pick up or drop off. However, you will still need to wear a mask should you enter the school buildings.

Student free day Monday November 1st

Just a reminder that our Curriculum Day on the 1st of November will go ahead. Staff will be working on various documents and reports to ensure students have a smooth transition to 2022.

Best wishes everyone, welcome back!

Brooke



Time
Routine
Action
No surprises
Schedule
Information
Time prewarning
Visuals
Consistency
Now, next, later

New MSS Senior Learning Building

As our families may know our school is getting a new secondary learning building with the help of a state government grant of \$9.7 million dollars. Planning has been progressing from May 2021, with architects from Clarke Hopkins Clarke working with the department's project team and input from us here at MSS. Students, staff, the school council and the custodians of the Wurundjeri country have all been part of the design process and their thoughts and opinions have been embedded into this final plan. Images below of the landscape and floor finishes reflect the prominence of an Australian cultural theme.

We anticipate initial early works to move five relocatable (portable) buildings, as well as various sheds and containers from the proposed building site to various areas around the school grounds, will commence in December 2021. All other demolition work on the construction site will most likely commence in March 2022 with the new building ready for the 2023 school year.

Although the building is primarily for secondary learning spaces, the whole school will be using the specialist spaces as well as new exciting programs being developed by our amazing leadership and teaching teams. Also included in the new building are spaces for our therapy program and our independent living centre. A new staff lunch room and staff resource area will provide a central area for our staff to have their well earned breaks. This building will also provide spaces for student wellbeing, relaxation and express their creative side as well as modern student amenities including hoists in toileting areas and some classrooms.

Interior Design Interior View



External Exterior View - West



External Exterior View - East



External Landscape Plan



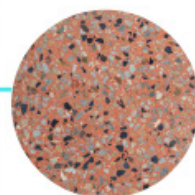
Yarning Circle
Change in ground finishes to signify a designated meeting place for discussion and collaboration.



Sensory Paths
Varied ground finishes and planting to create a multi sensory experience.



Productive Garden
Garden with raised planter beds. Opportunities for the Horticulture program.



Textured Concrete

Interior Design Floor Finishes Plan

-  C1 Carpet, Interface Nimbus 'Hickory'
-  C1 Carpet, Ontera Water Guluuna 'Blush'
-  V1 Vinyl, Forbo Eternal 'Natural Stone'
-  V2 Vinyl, Forbo Sphera Evolution 'Copper'
-  V3 Vinyl, Forbo Eternal 'White Washed Oak'
-  V4 Vinyl, Forbo Sphere Essence 'Cotta'
-  E Epoxy Floor, Rospray 'Stirling'
-  M Entrance Matting, Interface 'Step Repeat'





Hello From P1! This term we are thrilled to be back onsite! We have been very busy getting back into our school routine.

Our focus this week has been to follow our individual schedules, and to increase our play skills.



CLASS FESTIVITIES WITH S1

S1 are very excited to be back learning in the classroom! We will be delving further into learning key word signs as well as expanding our literacy skills with the MultiLit program and our tutor, Laura.



Everyone has settled back in and we are looking forward to making 'elephant toothpaste' and growing crystals in our chemistry unit in term four. Our highlights will be exploring the Melton Botanic Gardens and heading off to the Ballarat Wildlife Park later this term.





KIDS *Summer* HOLIDAY

20/Dec-27/Jan

**Fun filled
Sensory
friendly
activities**



Transportation
available

4-12yrs



**1A Bellairs
Ave,
Seddon
VIC 3011**

**outdoor games,
treasure hunt, story
telling, carnival
games, Interactive
play and much more.**

www.wonderkidz.net.au/ Call: 0402524656

WE ARE A SUN SMART SCHOOL

All students must bring a hat to school during terms 1 and 4 for outdoor play. While many children do not like to wear hats. Persistence is needed to teach them that a sun protective hat is part of their outside routine. If a hat is on, the outdoor fun is on! Remember children are more likely to wear their hat if you do too.



UNIFORM SHOP

The uniform shop will run by appointment only until otherwise advised. If you are requiring uniform please call the office on 9743 4966 to make a time.

Due to restrictions, students will be unable to try on uniform items, however feel free to bring in a personal clothing item to help compare sizes.

We also are unable to exchange items for different sizes after purchase. We apologise for any inconvenience.

Preferred payment is Bank Transfer or we can accept correct Cash.

CHECK OUT OUR SCHOOL FACEBOOK PAGE!

Remember to "like" Melton Specialist School on Facebook to stay up to date on the latest news and activities. You can also download the school newsletter to see what is coming up on the school calendar.

